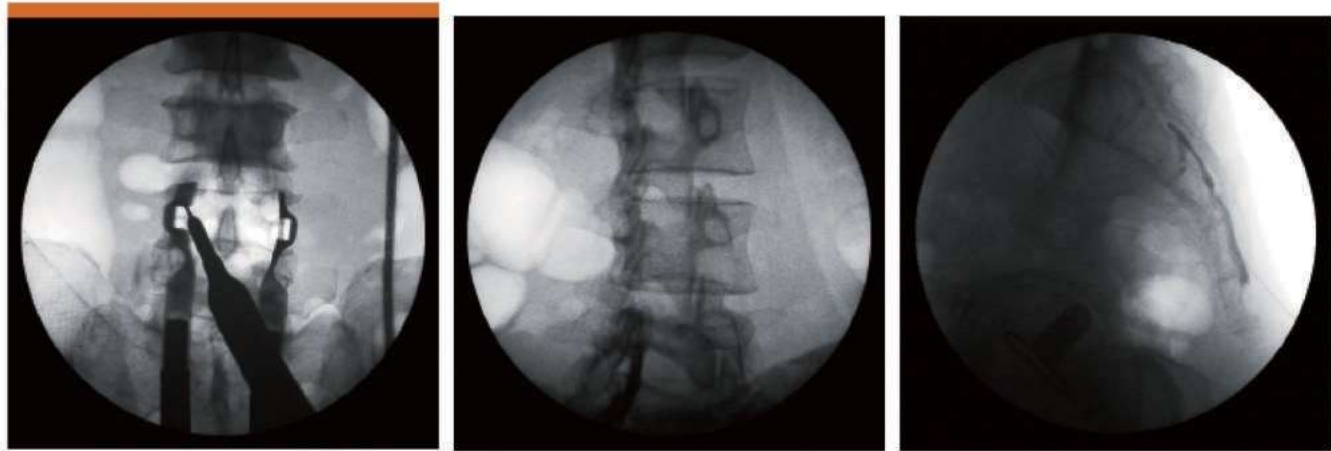


**High-quality Imaging**

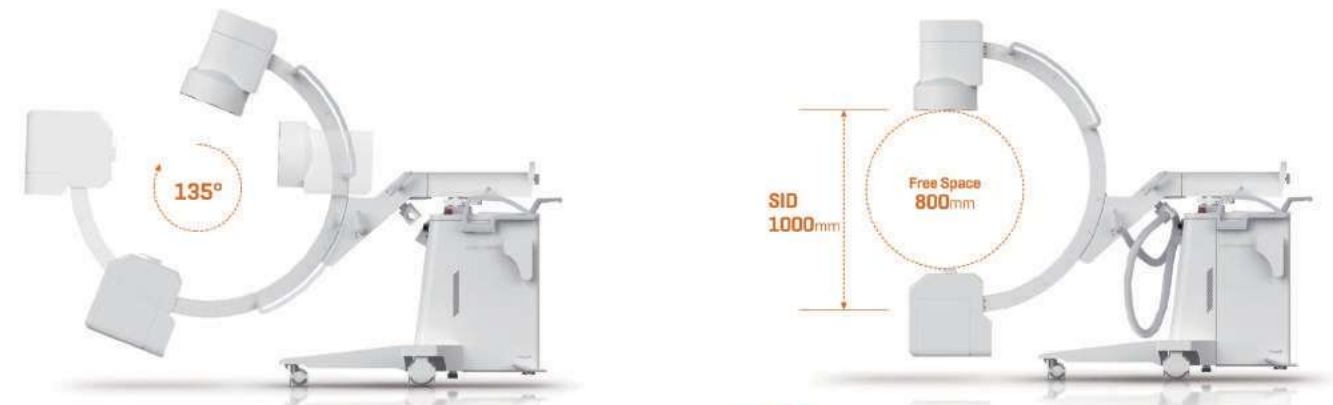


Spinal Fusion      Spine Root Block      Caudal Block



Shoulder Arthrography      Metacarpal Bone DRIF      Ankle DRIF

**Flexible Movement**



**HEAD OFFICE**  
 227, Sowon-ro, Deogyang-gu, Goyang-si, Gyeonggi-do 10534 Korea  
 Tel. +82 31-906-9017 Fax. +82 31-948-4208  
 sales@gemss.co.kr www.gemss.co.kr

**INDONESIA DISTRIBUTOR**  
**PT. Setia Zam Med**  
 Habitat Land Cibinong, Blok R1 No.2, 4, 6, 8  
 Jl. Kramat Raya - Cikaret Cibinong RT.04 RW.05, Kel. Tengah,  
 Kec. Cibinong, Kab. Bogor, Jawa Barat 16914 - Indonesia  
 Telp. 021-83723061



**PT. Setia Zam Med**

**GEMSS HEALTHCARE**

setia.zamed@gmail.com  
 www.x-vision.co.id

© GEMSS HEALTHCARE Co., Ltd. All rights reserved.  
 GEMSS HEALTHCARE reserves the right to make any changes in design and specifications contained herein without prior notice and will not be liable for any consequences resulting from the use of this publication. Any technical data contained in this document may vary within defined tolerances. Original Images always lose a certain amount of data when reproduced. Please contact your local GEMSS sales representative for the most current information.

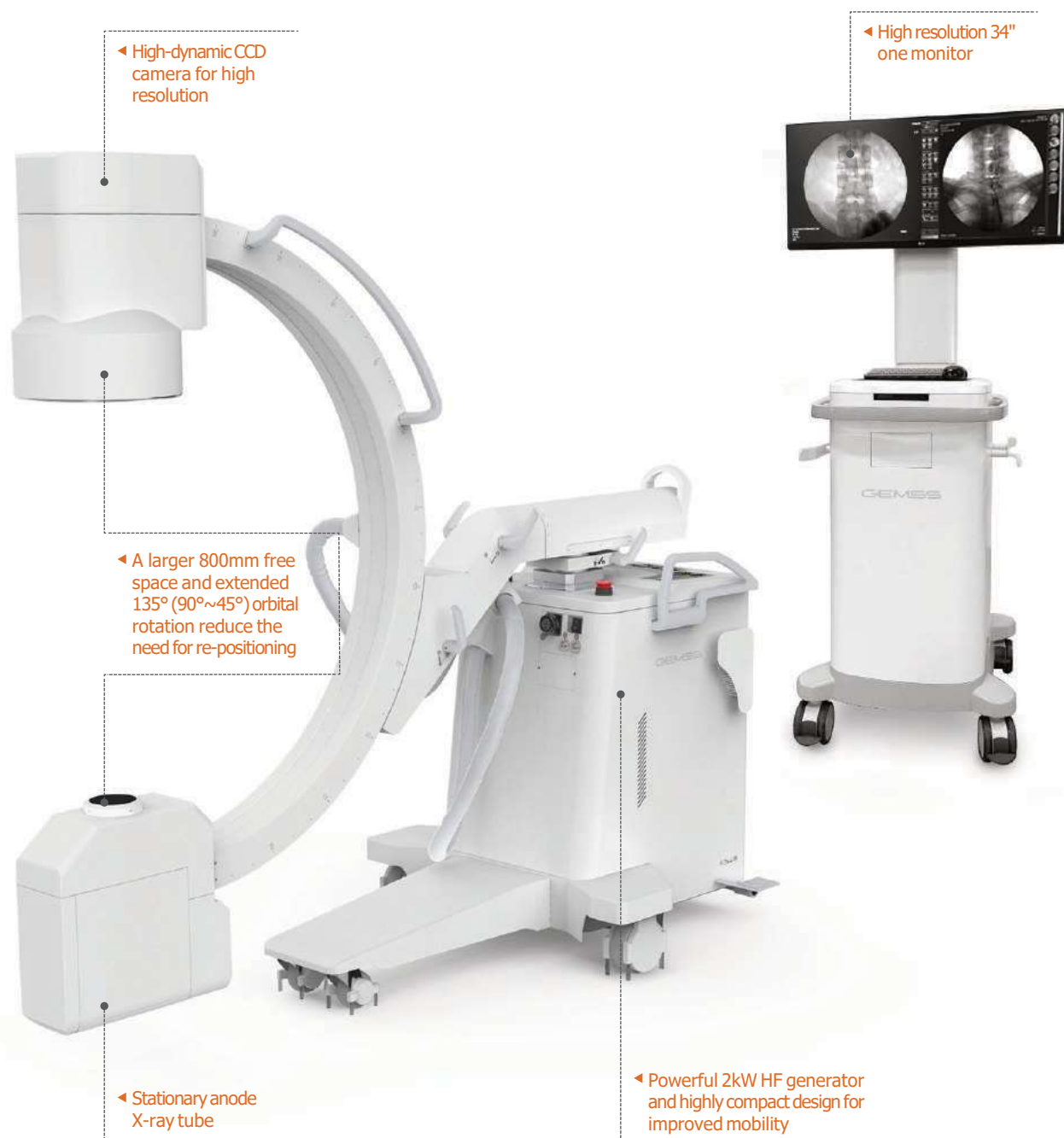


# KMC-650P

MOBILE SURGICAL FLUOROSCOPIC X-RAY SYSTEM

# High Quality & Economical Solution

KMC-650P is a compact and economical C-arm system suitable for various applications in neurosurgery, pain management, orthopedics and emergency room. With high-dynamic 1K CCD Camera, KMC-650P offers excellent quality of high resolution images to support safe operation and precise diagnosis. Also KMC-650P's 'Function key', which is a pre-set of radiation doses per aiming area and image calibration value for specific operation, allows practitioners to achieve best image quality in various clinical applications. Its compact design improves space-efficiency to set up operation room and wide C-arc increases flexibility of the operation table. Wide free space and orbital rotation allows easy patient access, decrease re-positioning, and improve operators' movement.



## Optimized Workflow

- Compact design provides more free space for operation
- Capable of long time and multi-frame recording
- Supports multi-selection of frames/sec (max 30 frame)

- \* DAP (Dose Area Product)
- \* Thermal Printer
- \* Cassette Holder
- \* Grid
- \* Hand switch
- \* indicates optional item

## Specifications at a Glance

- ✓ 2kW, High Frequency Generator
- ✓ 1K x 1K High Resolution CCD Camera
- ✓ 135° Wide Orbital Rotation with Large SID Distance
- ✓ Control / Optimize Radiation Dose
  - Virtual collimator
  - Pulse mode
  - Air Kerma
  - Laser guide
- ✓ High Resolution 34" One Monitor
- ✓ Easy Archiving and Documentation
  - DICOM 3.0
  - CD/DVD Burner
  - Thermal Printer
  - USB Port
- ✓ Monotank Type Tube
- ✓ Three-field 9" Image Intensifier

## Smart CX-View

- ✓ Database Management
  - More convenient search & save capabilities
  - Manage patient information
  - Before & after surgery comparison
- ✓ Large capacity storage (HDD: 500GB)
  - Until 99case per study
  - More than 204,000 still images / 1,100 cine image (at 180 frame cine)
- ✓ Versatile Diagnostic Tools
  - Zoom, contrast, reverse, invert
  - Filtering, edge enhancement
  - Annotation
- ✓ PACS Connectivity with DICOM 3.0
  - Store and print, modality worklist management
  - MPPS, storage commitment, and import & export

