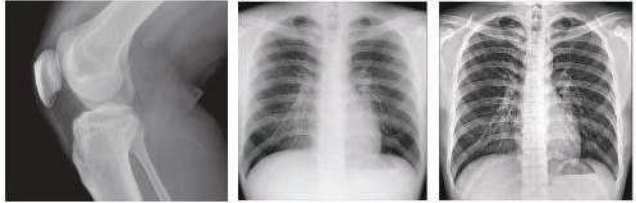




CE

MOBILE X-RAY SYSTEM **POX-100BT**

POX-100BT has powerful strength of 100mA and ideological design for mobile application. Experience high imaging resolution, user-friendly operation and smooth movement.



Raw Image

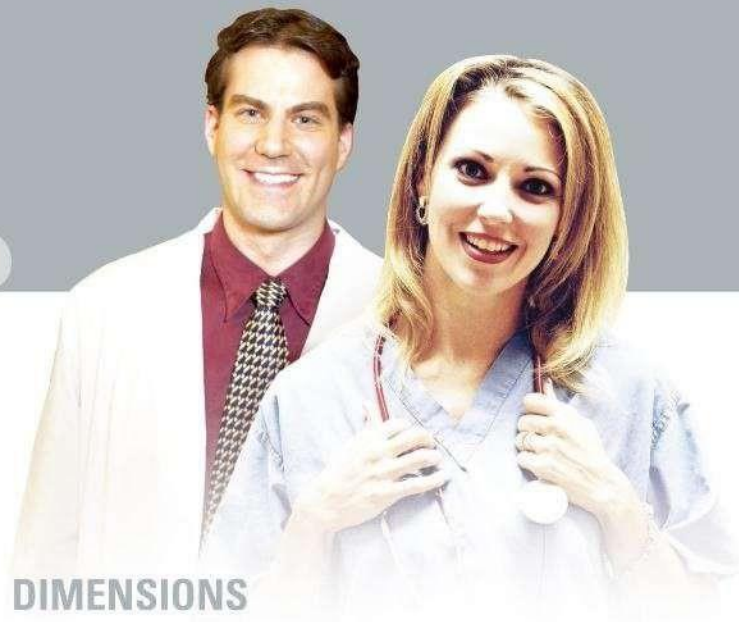
Enhanced Image



**100mA, 5.0kW Battery Powered
Mobile X-ray system for Medical**

POX-100BT

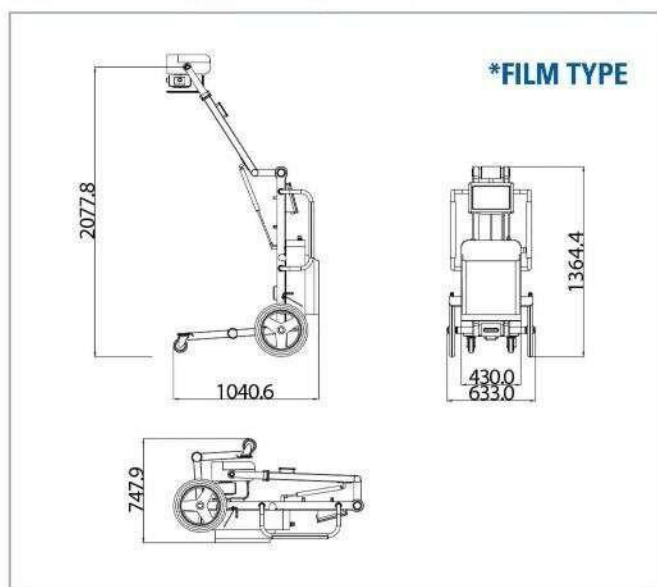
Mobile X-ray System



SPECIFICATION

MODEL	POX-100BT
Generator Type	5.0kw,60khz BATTERY TYPE
Kv Range	40~110kv, 1.0kv increment
mA Range	20~100mA, variable
mAs Range	0.1~100mAs, 38selections
Console & Display	-kV & mA & mAs/sec digital display -Density(for human) digital display -Prep. & Exposure LED -Collimator lamp Switch -APR Store Switch
Software	-PROM Memory : 30 APR
X-ray Tube	Type: Fixed anode Focal spot size: 1.8mm Heat Storage: 30000J Cooling rate: 250W Inherent Filtration: 0.5mm Al Target angel: 15°
Laser Pointer	Single & Dual laser (Optional)
Collimator	Manual: PCM100 Lamp: 24V150watt, halogen lamp, built-in: 30sec. Timer(DC: 30sec) X-ray Field Size: 35cm * 35cm @ 65cm SID
Auto Compensation	Line voltage comp. ±10%
Charge input	100V – 240 VAC ,50/60Hz
Net Weight	140kg
Optional Flat Panel Detector	Rayence

DIMENSIONS



Digital Radiography System (Optional)

