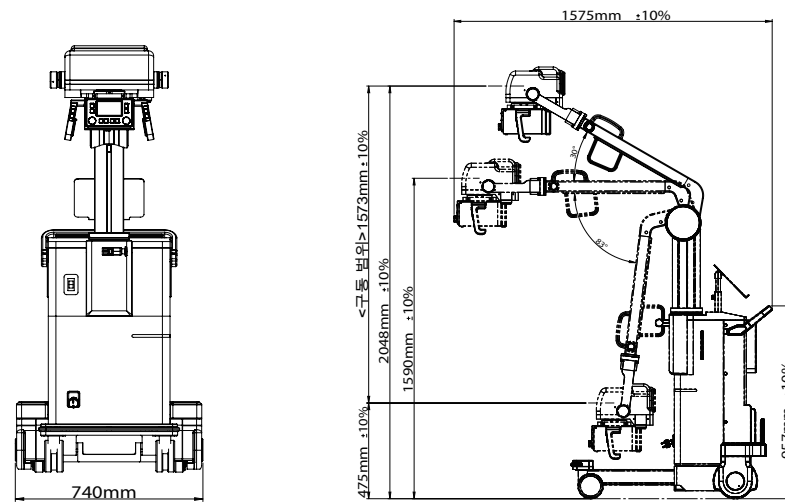




Size



Specification

Type	32kW Mobile Radiography	
	Max Power	32kW
Input Power	AC	
	AC 220 ~ 240V	
	50/60Hz, 16A	
X-Ray Tube	Type	Monoblock
	Focus	Focus 0.6, 1.3 mm
RAD	kV	40kV ~ 125kV (1 kV Step)(+8 %)
	mAs	0.5 ~ 400mAs (±10%+0.2mAs)
Collimator	<ul style="list-style-type: none"> * Auto Collimator * 4.3" Touch screen OP * Ultrasound SID Sensor * kV, mAs, APR control 	
Weight	287 kg	
Motor drive Battery	12V / 12Ah*4ea	
	Model: NPB-120-48TB Adapter (cc, cv function)	



SMX-320A

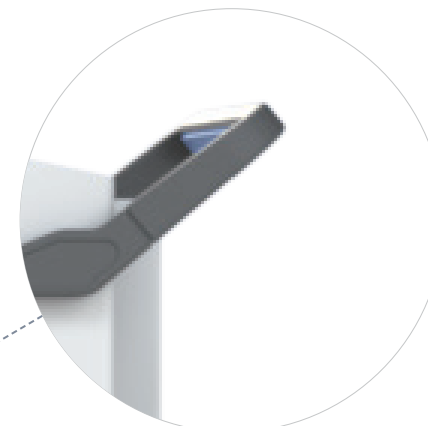
32kW
220V AC TYPE



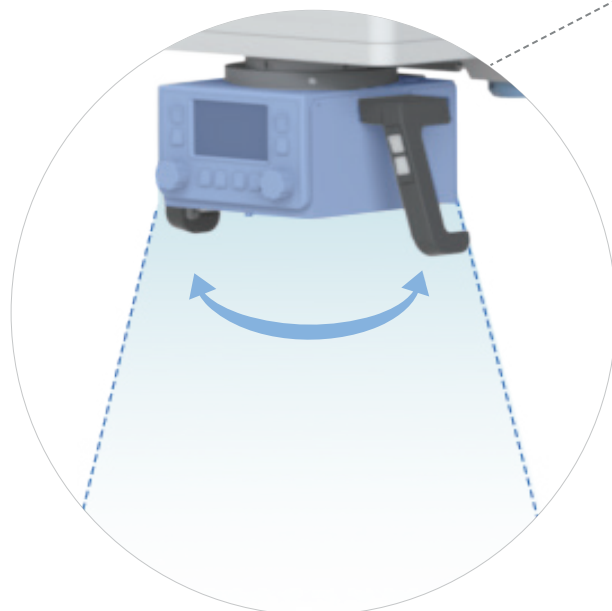
32kW Monoblock Type
4.3" Touch Screen OP



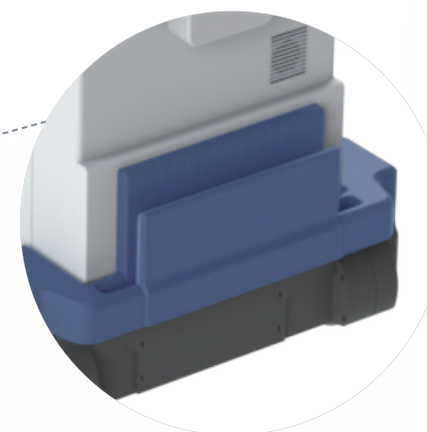
Laptop Positioner
Up&down Angle
Adjustment Available



Steering Bar
Loadcell Sensor



Collimator
X-ray Field size Max 46x46 cm
Lamp(LED) More than 130 lux



Detector Panel Pocket

Safety guard bumper

Motorized Wheel

